



**SPORTS AND GYMKHANA  
ANNUAL REPORT  
(2021-2022)**



**SHRI TULJABHAVANI COLLEGE OF ENGINEERING  
,TULJAPUR DISTRICT- OSMANABAD.**





# SHRI TULJABHAVANI COLLEGE OF ENGINEERING, TULJAPUR, DIST. - OSMANABAD

## ***Introduction to Sports:***

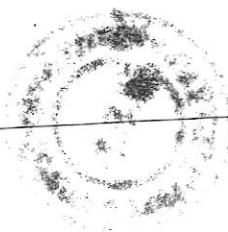
Sports includes all forms of competitive physical activity or games which, through casual or organized participation, at least in part aim to use, maintain or improve physical ability and skills while providing enjoyment to participants, and in some cases, entertainment for spectators.

## ***Vision:***

To achieve good standards to technical keeping pace with rapidly changing Technologies and create technical man power of global standards with capabilities of accepting new challenges.

## ***Mission:***

To impart quality and value based education to raise satisfaction of all stake holders with special focus in rural masses. Our endeavor to promote research and development activities and to provide all possible support to society at large



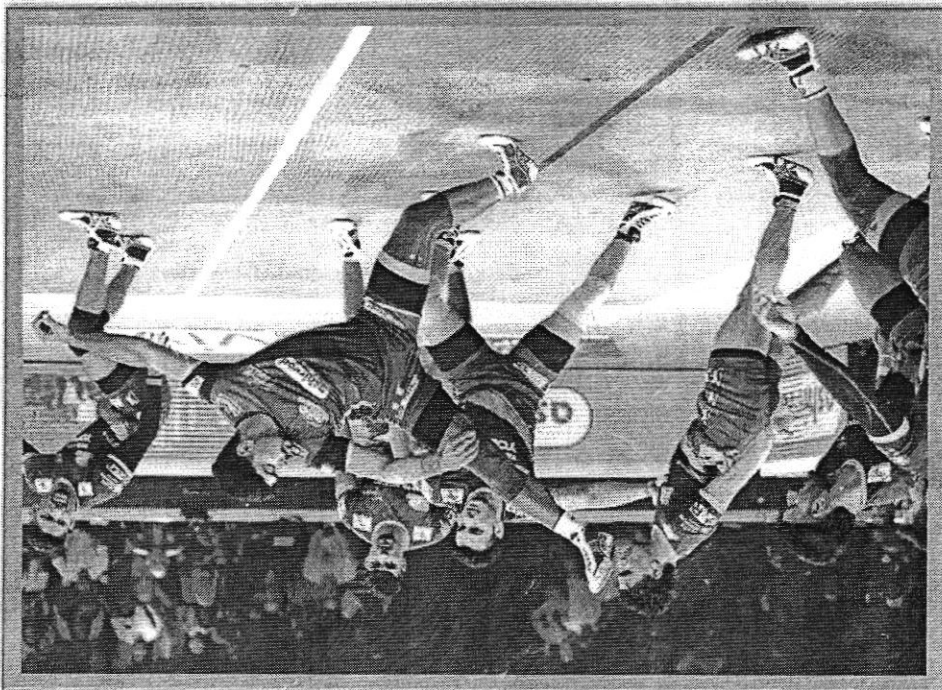


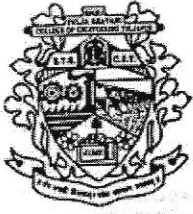
- To develop and upgrade with the excellent, appropriate sports infrastructure facilities with a quality of sports equipments.
- To maintain the indoor and outdoor sports Infrastructure facilities in campus.
- To search sports talent at Institutional level and to groom them to be better performers in national and international arena.
- To promote student sports participation and to create awareness about the benefits of physical education and sports and to spread sport culture among the student of S.T.B.College of Engineering ,Tuljapur
- To provide systematic coaching programmes by involving qualified and competent sports and sports talent.
- To project potentials of college by organizing intercollege , university and state level tournaments.

---

## *Objectives:*

---





# SHRI TULJABHAVANI COLLEGE OF ENGINEERING, TULJAPUR

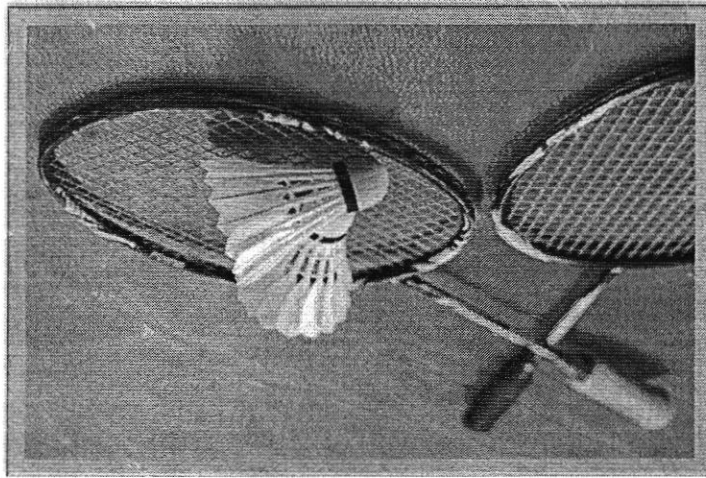
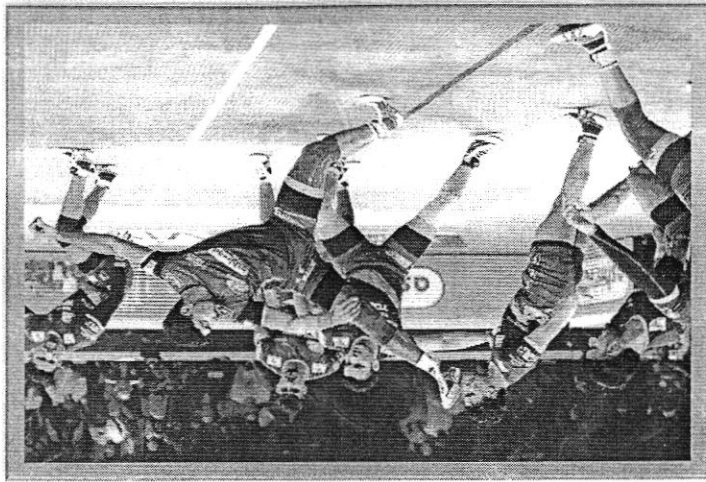


## SPORTS AND GYMKHANA

### **RULES FOR COLLEGE GYMKHANA:-**

- Gymkhana facilities are available only to the bonafied student of the college .
- Gymkhana facilities will be available to the student on working days only.
- No student shall be permitted to use gymkhana facilities without proper identity card .
- Student should not use others identity card for gymkhana purpose.
- No student will be permitted to play in the gymkhana while his/her lecture or practical session is in progress.
- Students having less than 75% attendance in lecture/ practical's/tutorials will not allowed to use gymkhana facilities till his attendance are reached to 75%.
- Student issuing sports equipments against ID Card will be solely responsible for any damage, breakage or loss of the equipment. He/She will have to bear the cost of damage/ breakage.





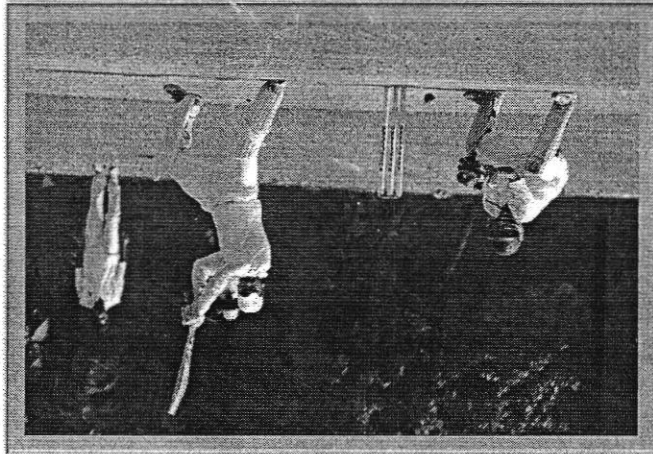
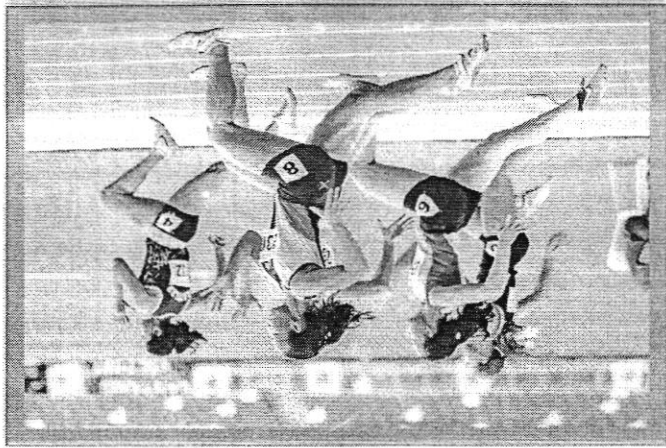
by the college authorities.

- The gymkhana facilities shall not be provided during the examination period.
- Student shall not create a nuisance in the gymkhana through their words or the action.
- Student found guilty of using foul language or indulging in any action that may obstruct the lectures or other work in the college will be barred. From the use of gymkhana facility.
- Eating , Chewing Pan , Tobacco , Gutkha , Drinking is prohibited in the gymkhana
- For any complaints regarding the gymkhana and its facilities, the final decision will be taken by the college authorities.



**SHRI TULABHAVANI COLLEGE OF ENGINEERING,  
TULAPUR**





STB COLLEGE OF ENGINEERING, SPORT is seen as an integral part of education. The college encourages and sportsmanship through the sports department. We provide facilities and opportunities to the young students for their athletics skills and fitness. The college encourages the student to participate in various sports activity, university level, state level, district level and inter-college level.

### **ABOUT SPORTS:-**



**SHRI TULJABHAVANI COLLEGE OF ENGINEERING,  
TULJAPUR**



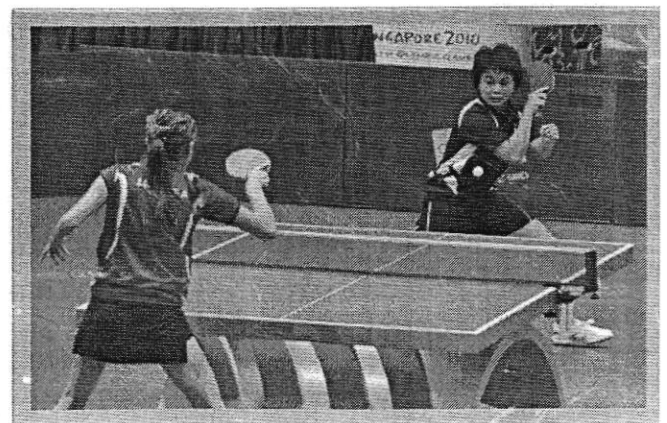
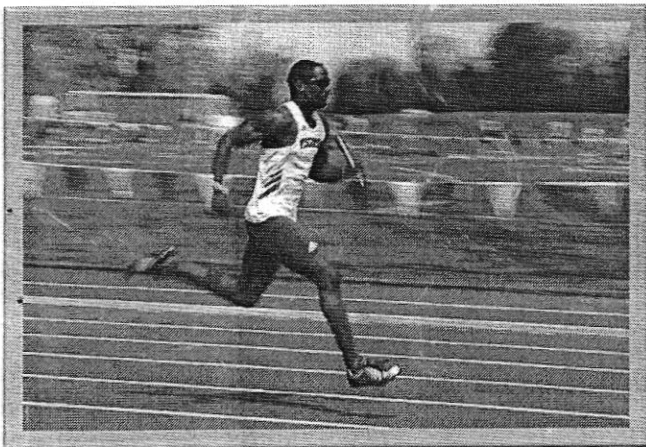


# SHRI TULJABHAVANI COLLEGE OF ENGINEERING, TULJAPUR



## GAMES PLAYED:-

- Carom
- Chess
- Table Tennis
- Badminton
- Volleyball
- Kabadi
- Cricket
- Athletics and many more.



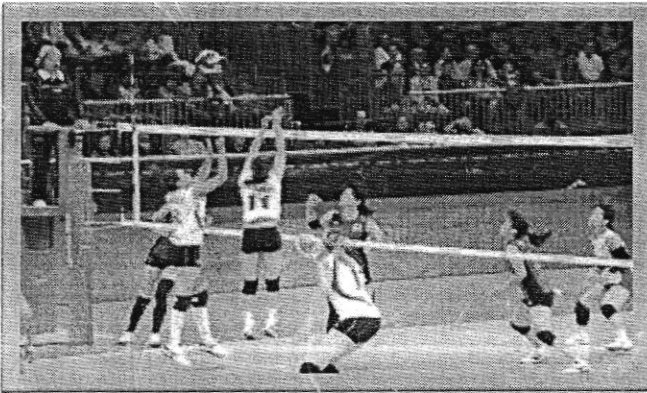


# SHRI TULJABHAVANI COLLEGE OF ENGINEERING, TULJAPUR



## Committee:-

1. Principal – Dr. ~~S.M. Jagade~~ *N. D. Pergad,*
2. Chairman and Members – 1) Prof. S.N. Doijode  
2) Prof. R.M Kame  
3) Prof. S.D Sagare  
4) Prof. P.M Sutar
3. Boys Sport Secretary- .....(College Level)
4. Ladies Sport Secretary -.....(College Level)
5. Deputy Secretary (Department wise)-.....
6. Boys Hostel In charge-.....
7. Ladies Hostel In charge-.....



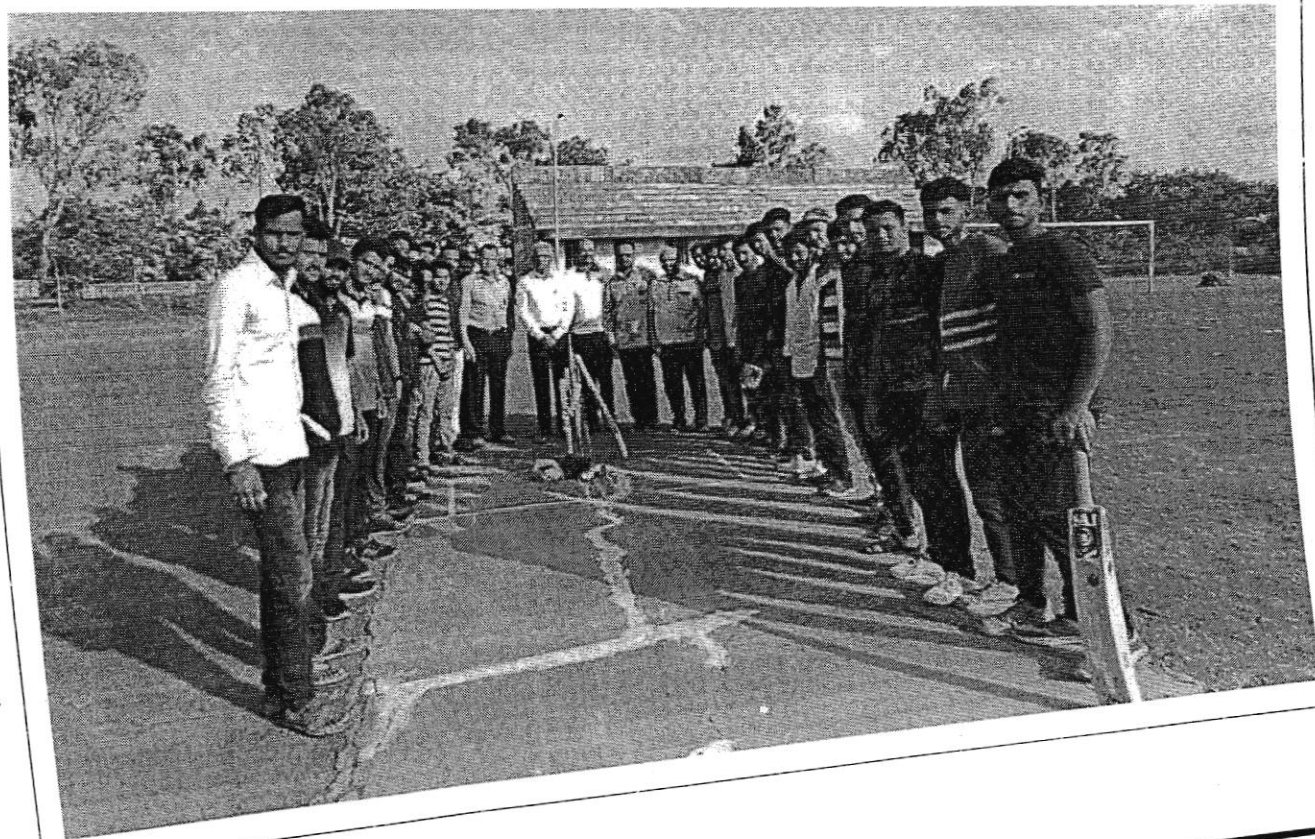
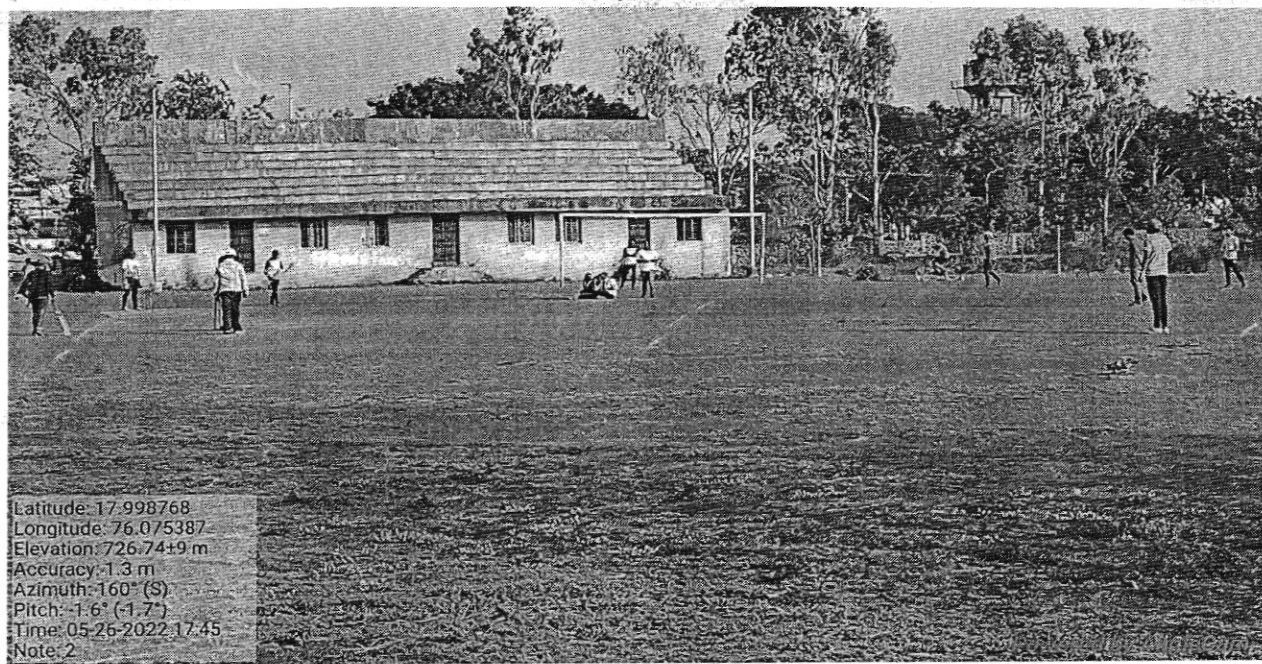




SHRI TULJA BHAVANI TEMPLE TRUST'S  
SHRI TULJABHAVANI COLLEGE OF ENGINEERING, TULJAPUR  
(Approved by AICTE and Affiliated to DBATU, Lonere, Dist.: Raigad)  
National Service Scheme(NSS)(2022-2023)



## CRICKET







**SHRI TULJA BHAVANI TEMPLE TRUST'S**  
**SHRI TULJABHAVANI COLLEGE OF ENGINEERING, TULJAPUR**  
 (Approved by AICTE and Affiliated to DBATU, Lonere, Dist.: Raigad)  
National Service Scheme(NSS)(2022-2023)



## CRICKET



Latitude: 17.998764  
 Longitude: 76.075383  
 Elevation: 648.94±33 m  
 Accuracy: 2.0 m  
 Azimuth: 152° (SE)  
 Pitch: -1.9° (-1.4°)  
 Time: 05-26-2022 17:45  
 Note: 1



Latitude: 17.997861  
 Longitude: 76.075883  
 Elevation: 648.24±17 m  
 Accuracy: 2.3 m  
 Azimuth: 338° (N)  
 Pitch: 5.8° (0.6°)  
 Time: 26-05-2022 10:58  
 Note: Cricket match Girls Civil V/S CSE 1

Powered by: *Amrit*

